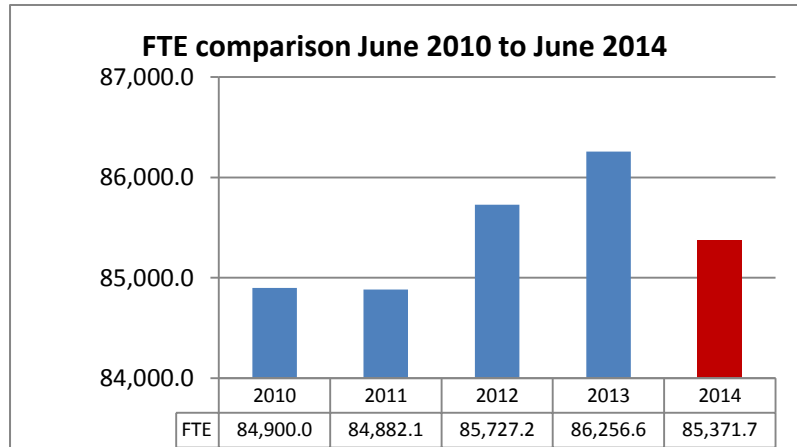


# Snapshot of the South Australian Public Sector Workforce Information

As at June 2014

Full Time Equivalent (FTE) **85,371.7**

Employees **103,087**



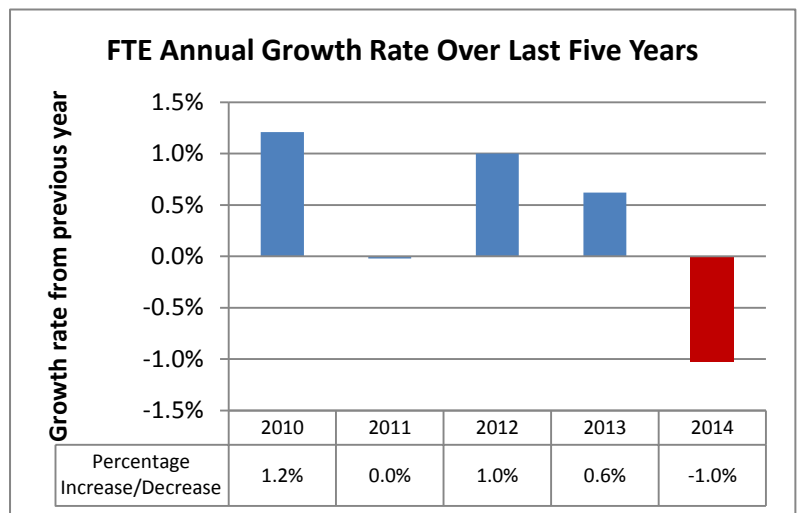
From June 2013 to June 2014, the SA public sector decreased by

**885 FTE** or **1,175** employees

As at June 2014 the SA public sector workforce made up

**12.8%**

of total persons employed in SA



# Frontline and Back Office Employees

As at June 2014

Frontline **58,950.6 FTE**

From June 2010 to June 2014,  
frontline employees increased by

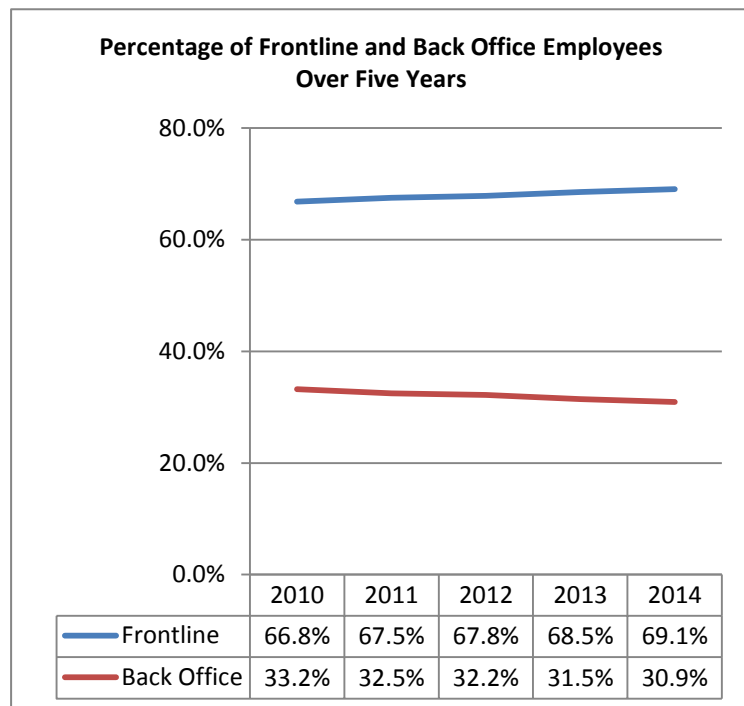
**2,242.8 FTE**

As at June 2014

Back Office **26,421.0 FTE**

From June 2010 to June 2014, back  
office employees decreased by

**1,771.2 FTE**



# Aboriginal Employment

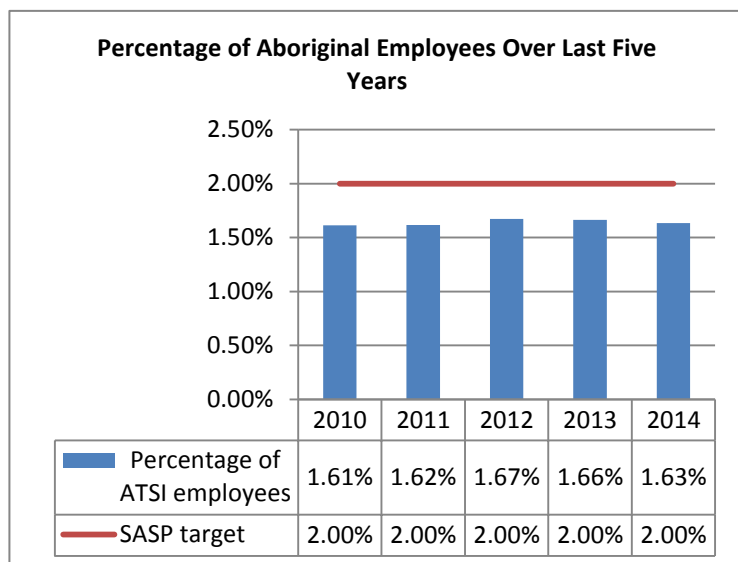
Aboriginal  
employees

**1,683**

As at June 2014 Aboriginal employees  
made up

**1.63%**

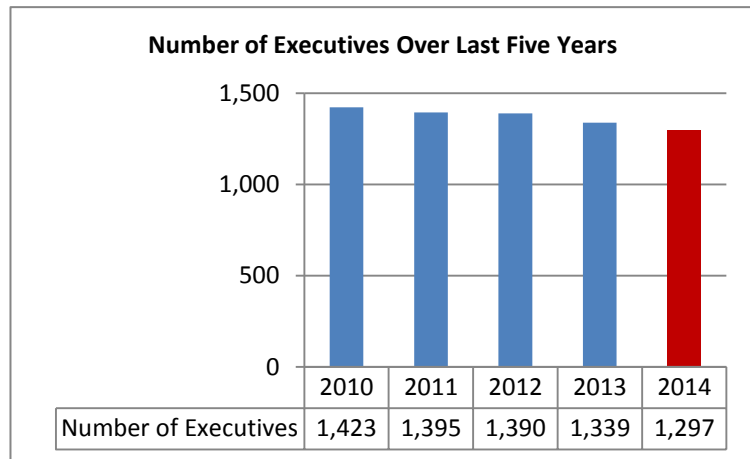
of the SA public sector workforce



# Executives

Executives **1,297**

From June 2013 to June 2014, the number of executives decreased by **42**



Female executives **559**

As at June 2014 female executives made up

**43.1%**

of the executive cohort

